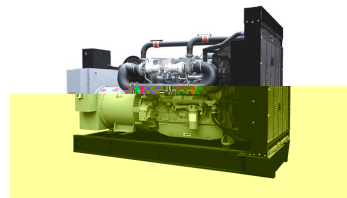


- : Perkins 1103A-33G
- : 50
- : IP23 H H
- :
- 24V 24V
-
-
-
-
-

ATS

KW/KVA	PWP33
KW/KVA	24/30
(HZ)	26.4/33
(VAC)	50
L/H	400
	5.9
	± 5%
/100%	± 1%
/	25%
/100% (S)	-20%
/ (S)	6
/100%	6
/	12%
/100% (S)	-10%
	5



● PERKINS

-
-
-
-
-
-
-
-

NOx < 2000mg/m

4000

24

/	PERKINS			
KW	28.2	31		
BHP	37.8	41.6		
r/min	1500			
	3			
	L			
	NA			
x	105x127mm			
	3.3L			
	19.25 1			
L	8.3			
(L)	10.2			
L/S	36			
L/S	95			
	500			
()				
g/kwh	309	235.4	216	211.1
	12V			

25°C(77°F) ISO 3046 — 110m(361ft) 100kPa (29.53inHg)
 30% NO.2 ASTM D2

