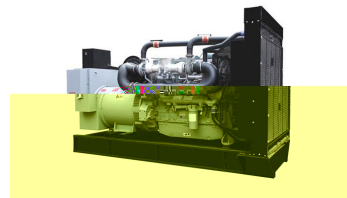


- : Perkins 1104C-44TAG2
- : 50
- : IP23 H H
- :
- 24V 24V
-
-
-
-
-
-

ATS

KW/KVA	PWP110
KW/KVA	80/100
(HZ)	50
(VAC)	400
L/H	19
	± 5%
/100%	± 1%
/	25%
/100% (S)	-20%
/ (S)	6
/100%	6
/	12%
/100% (S)	-10%
	5



● PERKINS

-
-
-
-
-
-
-
-

NOx < 2000mg/m

4000

24

/	PERKINS			
KW	93.6	103		
BHP	125.5	138		
r/min	1500			
	4			
	L			
x	105x127mm			
	4.41L			
	18.23 1			
L	8			
(L)	12.6			
L/S	100			
L/S	272			
	514			
()				
g/kwh	NA	108	157	207
	24V			

25°C(77°F) ISO 3046 — 110m(361ft) 100kPa (29.53inHg)
 30% NO.2 ASTM D2

